

OnSpec xSil 251 CF/ HDD Controller

xSil 251 Features

Controller

- 16Bit RISC Processor Optimized for NAND Flash Applications
- Hi-Speed USB 2.0 Interface; backward compatible with USB 1.1
- USB-IF certified, TID: 10510175
- USB Bulk Only Mass Storage Compliant
- USB-IF MSC-BOT Compliant
- Low Power (Processor operating current is 40mA)

CompactFlash / Hard Disk Drive Functionality

- UDMA Modes 0..4 supported
- PIO Modes 0..6, MDMA Modes 0..2 supported
- One Touch Backup functionality built-in
- Separate IO pin for LED

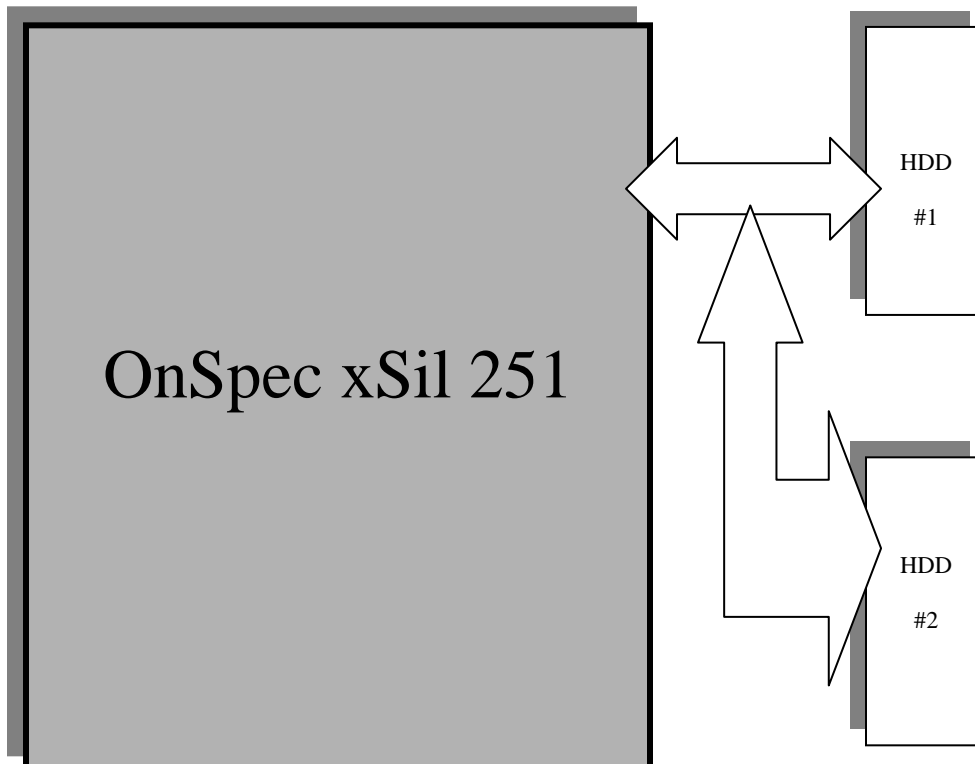
Applications

- Can support 2 Hard Disk Drives to form a Single Large Tera Disk
- Built-in SHA-256 Security Authentication Protocol
- Built-in support for Multiple Product Configuration with Multiple Partitions & CD Icons
- Contact Marketing for Value Added Applications

Production

- Readymade kit Available for Mass Production
- Minimal Part Count
- 48Pin Package

Block Diagram



HDD Compatibility & Benchmark Numbers

HDD Manufacturer Support List

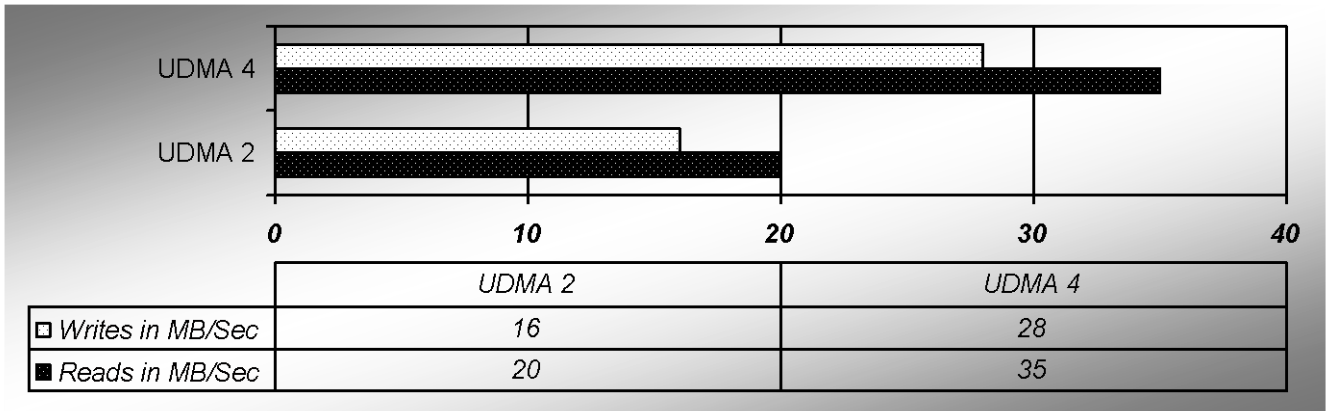
- Seagate
- Western Digital
- Samsung
- Toshiba
- Hitachi
- Maxtor
- Quantum

Boot Features

- Boots into Mac OS and Windows OS
- Supports Microsoft PD-DRM

UDMA CF Benchmark Numbers

- UDMA 2 – 20MB/Sec Reads & 16MB/Sec Writes
- UDMA 4 – 35MB/Sec Reads & 28MB/Sec Writes



3.5" Hard Disk Drive Benchmark Numbers

- Western Digital 250GB – 37MB/Sec Reads & 30MB/Sec Writes
- Seagate 400GB – 36MB/Sec Reads & 30MB/Sec

